



THE PENNSYLVANIA CHAMBER ORCHESTRA

SUMMER 2021 NEWSLETTER

WHAT'S INSIDE?

[PCO Covid Safety Policy](#)

[New Faces at the PCO](#)

[Concert Livestream Available](#)

[Together Again! Season Details](#)

[Notes from the PCO Board President](#)

[A Call for Support](#)

Connect with us

The Pennsylvania Chamber Orchestra

119 S Fraser Street, Suite D
State College, PA 16801
814.234.8313
info@pachamberorchestra.org
PACHamberOrchestra.org



Newsletter costs offset in part by



Thank you!

FROM THE PODIUM

Dear PCO Family,

It has been a challenging period for all of us, but I am so thrilled that we will be back to in-person concerts this coming season! The musicians have missed seeing each other and missed making music together, and more than anything, we miss our relationship with all of you, and cannot wait to see you in person and share great music with you.

Continuing where we left off sounds like a cliché, but in this case, this is actually going to happen. When we cancelled our last season due to Covid, I was extremely disappointed that we could not present the Mozart-Piazzolla-Dvorak concert. I am so happy that we will perform the same program, with the same soloist, Akemi Takayama as our season opener! Coincidentally, this year, musicians around the world are celebrating Piazzolla's 100-year anniversary, so if you love Tango music, you don't want to miss this concert! In fact, we hope you will not miss any of our concerts; we have a great season with terrific programs and truly amazing lineup of soloists.

We appreciate your generous support, especially during these times, but more than anything else, we cannot wait to welcome you back into the beautiful Recital Hall and share music with you.

Musically yours,

Yaniv Attar
Conductor



PCO COVID SAFETY POLICY

After much discussion, the PCO Board of Directors has voted to require that all orchestra members and soloists be fully vaccinated and to provide evidence of their vaccinations before returning to in-person rehearsals and performances. Further, musicians are encouraged to wear a mask during rehearsals and performances when able to do so or when venues require them to do so. Additionally, all staff, volunteers, and audience members must wear a mask at all times while attending indoor rehearsals, concerts, and events. For the full policy and any updates, please visit pachamberorchestra.org/covid.

NEW FACES AT THE PCO

The PCO is happy to introduce several new members of our board of directors and artistic and administrative staff.

Susan Berbec joined the PCO board and was immediately put to work as the board treasurer. She is the controller/financial officer at Centre LifeLink EMS.

michael black is the creative director, photographer, and owner of BLACK SUN studio. We look forward to having his impeccable creative input.

Rachael Hartman joins us from Centre Foundation where she is the Community Impact Director. She has been a great help with grant applications and community connections.

Rebekah K. O'Brien is PCO's new assistant conductor. She completed her studies in conducting under Gerardo Edelstein at Penn State University in 2007, served as a guest conductor with the Newark Symphony in Delaware for the past 10 years, and is entering her seventh year as the orchestra director at Juniata College.

Last, but certainly not the least, **Josamarie Stalcar** joins the team as the PCO's administrative intern. Josie is a 4th year bachelor's student studying music education and trumpet with Langston J. Fitzgerald III at Penn State University.

FREE CONCERT LIVESTREAM AVAILABLE FOR 2021-2022 SEASON

Thanks to a sponsorship, the Pennsylvania Chamber Orchestra will once again offer a free concert livestream for all our friends to enjoy around the world. Tune in live to join us in the concert hall for a high-quality concert experience created from multiple cameras around the orchestra and produced by CW Studios. The livestream will be available during concerts at pachamberorchestra.org/livestream and will be linked on Facebook.

BOARD OF DIRECTORS

Larry Mroz, President
 Arthur Curtze, Vice President
 Ron McGlaughlin, Secretary
 Susan Berbec, Treasurer
 michael black
 Rachael Hartman
 Lynn Hutcheson
 James Lyon
 Fritz Smith
 Nina Woskob
 Karen Blair Brand, Emeritus

ARTISTIC & ADMINISTRATIVE STAFF

Yaniv Attar, Music Director
 Rebekah K. O'Brien, Assistant
 Conductor
 Anna Skrupky, Executive Director
 Susan Kroeker, Personnel Manager
 Josie Stalcar, Administrative Intern

TOGETHER AGAIN! PCO's 2021-2022 SEASON

The Pennsylvania Chamber Orchestra is thrilled to return to live performances in the stunning Recital Hall at the Penn State School of Music for its 2021-2022 season – Together Again!



Maestro Attar says, “We have an incredible season coming up, with a fantastic line up of soloists! The repertoire will be a wonderful combination of both known and lesser-known works which I know you will love. I’m especially excited about the soloists who will be joining us this season, but more than anything, I am so thrilled to finally reconnect with both the orchestra and our audience.”

Tickets for all concerts taking place at Penn State will be sold through the box office at Penn State’s Eisenhower Auditorium and can be purchased online, over the phone (814-863-0255), in person prior to the concert at the Eisenhower Box Office, or in person on the day of the concert at the Recital Hall.

Discounted season ticket packages for adult reserved seats will be available prior to the September concert for a 10% discount.

For full ticket and venue information, visit pachamberorchestra.org/ticketvenueinfo.

Season Concert 1: “Explore Together”

Sunday, September 12, 3 pm - Penn State Recital Hall

Akemi Takayama, Violin

Ástor Piazzolla - The Four Seasons of Buenos Aires

Wolfgang Amadeus Mozart - Overture to *Abduction from the Seraglio*, K. 384

Antonín Dvořák - Czech Suite, Op. 39



Holiday Concert: “Handel’s Messiah”

Sunday, December 12, 3 pm - Penn State Recital Hall

Christopher Kiver, Guest Conductor

Penn State Concert Choir

Soloists TBA

George Frideric Handel - Messiah, HWV 56



Season Concert 2: “Dance Together”

Sunday, January 30, 3 pm - Penn State Recital Hall

Anthony Costa, Clarinet

Anne Sullivan, Harp

Claude Debussy - Sacred and Profane Dances

Aaron Copland - Clarinet Concerto

Louise Farrenc - Symphony No. 3, Op. 36



Season Concert 3: “Celebrate Together”

Sunday, May 8, 3 pm - Penn State Recital Hall

Elisa Barston, Violin

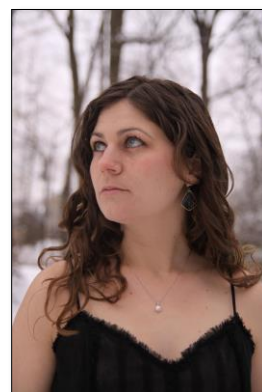
Amy Sue Barston, Cello

Elizabeth Morgan, Piano

Ludwig van Beethoven - Overture to *The Creatures of Prometheus*, Op. 43

Ludwig van Beethoven - Concerto for Violin, Cello, and Piano in C major, Op. 56

Ludwig van Beethoven - Symphony No. 7 in A major, Op. 92



ADDITIONAL OPPORTUNITIES TO HEAR THE PCO THIS SEASON

In addition to the three season and holiday concerts, the PCO has several other performances planned. Tickets for the following concerts will not be sold through Penn State. Visit pachamberorchestra.org/ticketvenueinfo for ticket information.

Family Concert

Details TBA

Rebekah K. O'Brien, PCO Assistant Conductor

Serenade

Details TBA

State College Choral Society: Mozart Requiem

Saturday, November 6, 7:30 pm – State College Area High School

Russ Shelley, SCCS Music Director

State College Choral Society with the Pennsylvania Chamber Orchestra

Wolfgang Amadeus Mozart - Requiem in D minor, K.626



State College Choral Society: Mendelssohn “Lobgesang”

Saturday, April 30, Time & Location TBD

Russ Shelley, SCCS Music Director

State College Choral Society with the Pennsylvania Chamber Orchestra

Felix Mendelssohn - Symphony No.2, Op.52 "Lobgesang"



FROM THE BOARD PRESIDENT

Greetings,

I hope this newsletter finds you in good health and ready to see your PA Chamber Orchestra perform once again from the beautiful and acoustically superb Recital Hall at Penn State.

The PCO board held a retreat at my residence in July, our first in-person meeting since March 2020. We reconnected over dinner, welcomed new board members, worked to affirm priorities, and established committees for the year ahead. Key 2021-22 committees include: events, fundraising, communications, and governance.



The PCO board members and staff welcomes nominations and volunteers for involvement in various committees or specific opportunities in the year ahead. Personally, I wonder if you or others may have considered ways to get involved and perhaps add PCO to your list of organizations to support with your time and talent. Please contact executive director Anna Skrupky or anyone on the board to discuss such volunteer roles – or ways to become more engaged – perhaps by hosting or attending events such as ‘lunch with the maestro’, often scheduled during concert weeks.

One aside... if you’ve ever attended or chaired a volunteer board or meeting, you may appreciate learning about how ‘in the dark’ we became during our memorable July board retreat. It happened to be the night a severe thunderstorm with high winds hit State College. With the storm approaching, we quickly moved from the back patio to the inside family room; space was tight but it worked. It poured rain just as the last items were brought in. Five minutes after reconvening our discussion the lights went dark; no power. The remainder of the meeting was held by flashlight and candlelight... an evening your PCO board members will never forget. I so appreciated the productive dialogue and involvement of each of the participants that evening.

I’m so thrilled that the lights are expected to shine brightly in the Recital Hall as the PCO concert season commences on September 12. Certainly, the performance will be radiant too!

Especially with recent announcements at PSU, we anticipate the PCO COVID Safety Policy shall provide for a safe and enjoyable experience. Of course, we understand there may be last-minute enhancements based on the possibility of more stringent health guidelines or venue policies. Stay tuned; we appreciate your understanding.

I look forward to seeing you soon. Thank you for all you do and have done to ensure PCO takes the stage – Together Again!

A handwritten signature in cursive script, reading "Larry Mroz". The ink is dark and the signature is fluid.

Larry Mroz, President, PCO Board of Directors

A CALL FOR SUPPORT

The Pennsylvania Chamber Orchestra would not have survived the 2020-2021 season without the support of donors like you. Thank you! As we move forward into a new season of ambitious performances, we still need your support. Great performances require great resources, and this season is no different. If you or your family enjoy the programming that the PCO provides, in-person or online, please consider making a financial donation to the orchestra.

We say this in every financial appeal, and it is always true. Donations of *any* size are greatly appreciated. We know that budgets vary and ask that you consider a donation in the amount that makes sense for yours. If a financial gift is not possible, consider volunteering for the orchestra. We have a variety of volunteer opportunities available.

You may also consider a lasting gift through the PCO Legacy Society. A planned gift using a beneficiary designation on your will is easy to establish. You also have the ability to name the PCO directly, or involve another organization, such as the Centre Foundation. Please contact us for more information.

Donations can be made online at PAChamberOrchestra.org/support, or the bottom of this page can be detached and mailed to the Pennsylvania Chamber Orchestra office at this address:

The Pennsylvania Chamber Orchestra
119 S Fraser St, Suite D
State College, PA 16801



THE PENNSYLVANIA
CHAMBER ORCHESTRA

119 S Fraser Street, Suite D
State College, PA 16801

Name _____

Address _____

City _____ State _____ Zip _____

Phone _____ Email _____

Donation ☐ \$2,500 ☐ \$1,000 ☐ \$500 ☐ \$250 ☐ \$100 ☐ Other amount _____

Card # _____ - _____ - _____ Exp ____/____ CVV ____

☐ Make this a recurring donation. (Initial by frequency) ____ Monthly ____ Quarterly (Jan, April, July, Oct)

Signature _____

☐ I would like more information about the PCO Legacy Society.

☐ I am interested in learning more about volunteer opportunities with the PCO.

Online donations are always accepted at PAChamberOrchestra.org/support

Please make checks payable to the Pennsylvania Chamber Orchestra or PCO.

Thank you for your support!